

Cameron Park Community Services District
2502 Country Club Drive
Cameron Park, CA 95682



**Fire and Emergency Services Committee
Tuesday, December 7, 2021
5:30 p.m.**

**Cameron Park Community Center
2502 Country Club Drive, Cameron Park**

Agenda

Members: Chair Director Sidney Bazett (SB), Vice Chair Director Monique Scobey (MS)
Alternate Director Eric Aiston (EA)

Staff: General Manager Jill Ritzman, Chief Sherry Moranz

CALL TO ORDER

ROLL CALL

Public testimony will be received on each agenda item as it is called. Principal party on each side of an issue is allocated 10 minutes to speak, individual comments are limited to 3 minutes except with the consent of the Committee; individuals shall be allowed to speak on an item only once. Members of the audience are asked to volunteer their name before addressing the Committee. The Committee reserves the right to waive said rules by a majority vote.

ADOPTION OF AGENDA

APPROVAL OF CONFORMED AGENDA

OPEN FORUM

Members of the public may speak on any item not on the agenda that falls within the responsibilities of the Committee.

DEPARTMENT MATTERS

- 1. Fire Station 88 Proposed Improvements** (J. Agustin, K. Richards)
- 2. Staff Updates**
 - a. Fire Department Report (oral, J. Agustin)
 - b. Updated Organizational Chart – Fire Department (hand-out, J. Agustin)

3. Items for September and Future Committee Agendas

4. Items to take to the Board of Directors

MATTERS TO AND FROM COMMITTEE MEMBERS & STAFF

ADJOURNMENT

COVID Procedure Updates: Social Distancing & Mandatory Use of Masks at Cameron Park Community Services District, Board of Directors Meetings

1. All community members and meeting attendees are required to wear a mask or face covering upon entering and remaining within the Community Center. The mask or face covering must cover the nose, mouth and chin.
 - a. The following persons are exempted from the requirement to wear a mask or face covering and will not be required to provide proof of such exemption:
 - i. Children under two years of age;
 - ii. Persons with medical conditions who cannot safely wear a mask or face covering (e.g. due to breathing difficulties, cognitive difficulties, hearing or communication difficulties);
 - iii. Persons who cannot wear or remove a mask or face covering without assistance;
 - iv. Employees who are in an area of the premise that is not designated for public access, or who are within or behind a physical barrier.
 - b. Temporary removal of the mask or face covering is permitted where necessary for the following purposes:
 - i. Actively engaging in an athletic or fitness activity including water-based activities;
 - ii. Consuming food or drink;
 - iii. For any emergency or medical purpose.
2. This policy will be implemented and enforced in “good faith” to primarily educate people on masks and face coverings and promote their use in enclosed public spaces.
 - a. Persons with exemptions listed under 1a) are not required to show proof of exemption.
 - b. Signs about the requirement to wear masks or face coverings shall be posted at all public entrances.
 - c. Persons entering or remaining without a mask or face covering will be given a verbal reminder of the policy’s masking requirement.
3. Social distancing is encouraged whenever possible. Chairs and tables will be spaced to support social-distancing.

Thank you for your cooperation and consideration. As individuals we can choose to help build a safe, healthy, and active community.



Fire and Emergency Services Committee
Tuesday, October 5, 2021
5:30 p.m.

Cameron Park Community Center
2502 Country Club Drive, Cameron Park

Conformed Agenda

Members: Chair Director Sidney Bazett (SB), Vice Chair Director Monique Scobey (MS)
Alternate Director Eric Aiston (EA)

Staff: General Manager Jill Ritzman, Chief Sherry Moranz

Director Scobey has a planned absence; therefore, Director Aiston will be attending as the alternate

CALL TO ORDER 5:33

ROLL CALL SB/EA

Public testimony will be received on each agenda item as it is called. Principal party on each side of an issue is allocated 10 minutes to speak, individual comments are limited to 3 minutes except with the consent of the Committee; individuals shall be allowed to speak on an item only once. Members of the audience are asked to volunteer their name before addressing the Committee. The Committee reserves the right to waive said rules by a majority vote.

ADOPTION OF AGENDA APPROVED

APPROVAL OF CONFORMED AGENDA APPROVED

OPEN FORUM

Members of the public may speak on any item not on the agenda that falls within the responsibilities of the Committee.

DEPARTMENT MATTERS

- 1. Report Back Rural Fire Capacity Grant (K. Richards)**
 - *Committee asked for report to be forwarded to the Board of Directors*
- 2. Additional Funding Request – Training Tower (K. Richards) APPROVED**
- 3. Staff Updates**
 - a. Fire Department Report (K. Richards)

- b. Status – First Responder Fee Nexus Study (J. Ritzman)

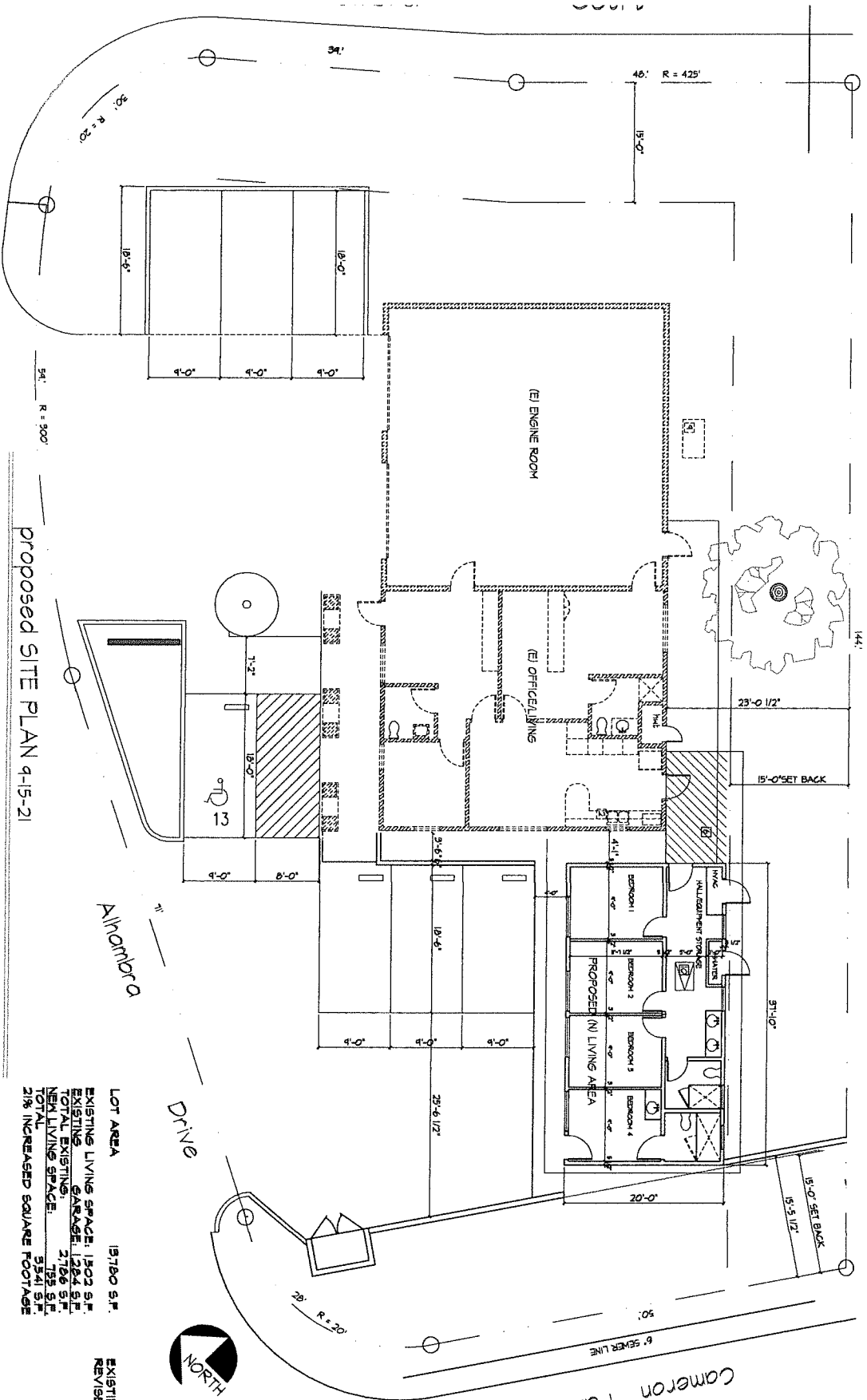
4. Items for September and Future Committee Agendas

5. Items to take to the Board of Directors

- *Funding Request for Training Tower*
- *Rural Fire Capacity Grant Report Back*

MATTERS TO AND FROM COMMITTEE MEMBERS & STAFF

ADJOURNMENT 6:11



Proposed Site Plan 9-15-21

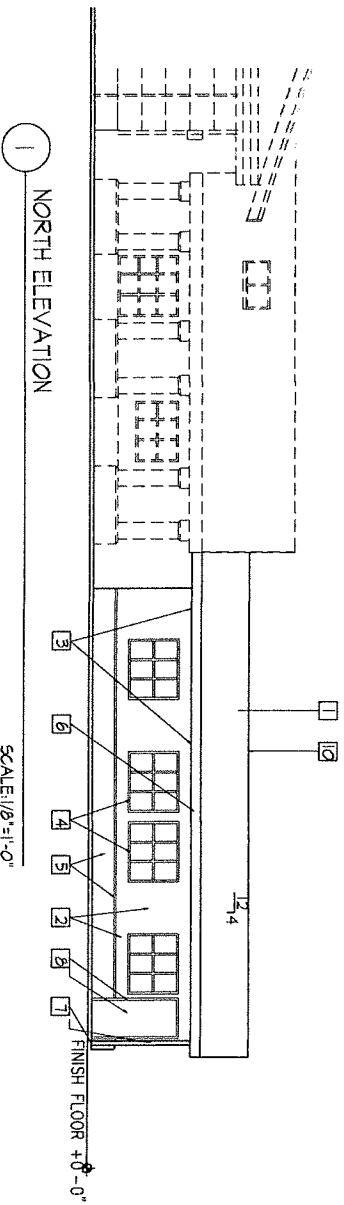
CAMERON PARK FIRE STATION 88
 2961 ALHAMBRA DRIVE, CAMERON PARK, CA 95682
 APN: 83-102-13

SCALE: 1" = 10'

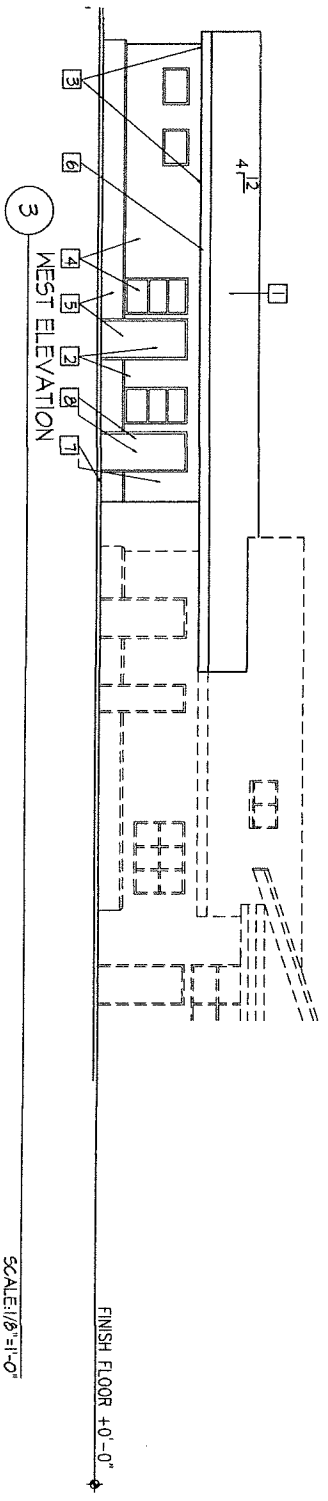
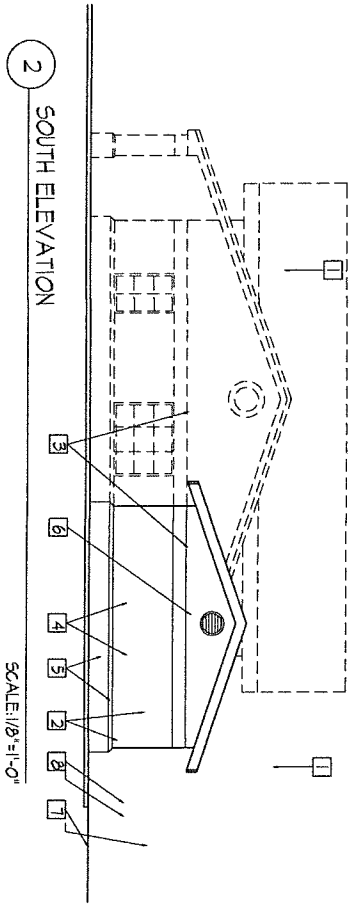
LOT AREA	13780 S.F.
EXISTING LIVING SPACE	1502 S.F.
EXISTING GARAGE	1224 S.F.
TOTAL EXISTING	2726 S.F.
NEW LIVING SPACE	155 S.F.
TOTAL	3541 S.F.
21% INCREASED SQUARE FOOTAGE	

EXISTING PARKING: 61
 REVISED PLAN: 61





- SHEET NOTES
- 1 ASPHALT SHINGLES ON TYVEC ON 30# FELT
 - 2 THIN BRICK VENEER ON 3/4" PLASTER ON MTL. LATH ON TYVEC
 - 3 EXTERIOR LED SOFFIT LIGHTS
 - 4 SINGLE-HUNG WINDOWS W/ SLOPING SILL
 - 5 FULL WHITE BRICK MANSCOT WITH SLOPING SILL
 - 6 2X10 FASCIA W/ T" GUTTER TYP
 - 7 T" GUTTER & DOWN SPOUT WITH HUB TO DRAIN
 - 8 H.M. DOOR IN A P.M. FRAME
 - 9 MANUFACTURED WOOD TRUSSES - SEE STRUCTURAL
 - 10 RIDGE AND EAVE VENT SEE CHART BELOW



proposed ELEVATIONS 10-1-21

SCALE: 1/8" = 1'-0"

SCALE: 1/8" = 1'-0"

CAMERON PARK FIRE STATION 88
 2961 ALHAMBRA DRIVE, CAMERON PARK, CA 95682
 APN: 83-102-13

