

Parks and Recreation Meeting

January 04, 2021



CAMERON PARK LAKE SPLASH PAD & PARK IMPROVEMENT PLAN UPDATE



RASMUSSEN PARK
COMMUNITY PARK | 10.1 ACRES



CONCEPT DESIGN



CHRISTA McAULIFFE PARK
COMMUNITY PARK | 7.1 ACRES



CONCEPT DESIGN



GATEWAY PARK
NEIGHBORHOOD PARK | 13.3 ACRES



CONCEPT DESIGN



DUNBAR PARK
NEIGHBORHOOD PARK | 0.9 ACRES



CONCEPT DESIGN



DAVID WEST PARK
NEIGHBORHOOD PARK | 6.2 ACRES



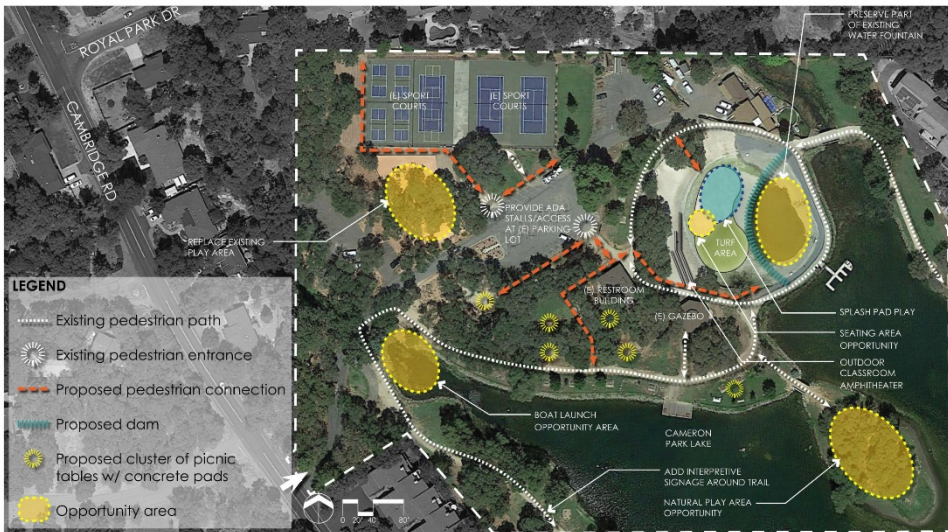
CONCEPT DESIGN



CAMERON PARK LAKE
COMMUNITY PARK | 56.5 ACRES



CONCEPT DESIGN



ROYAL OAKS
TRAIL/NATURE AREA | 10.4 ACRES



CONCEPT DESIGN



STRATEGIES

- Big Picture: Advance construction of one large project at a time, consider future maintenance and operations costs
- Funding: Existing, non-competitive funds & additional competitive grants

HIGH PRIORITY PROJECT

Cameron Park Lake:

- Existing closure of a major amenity in a highly used facility. Recommend replacement as soon as possible.
- Splash pad and adjacent improvements to replace the Lagoon. Less costly and more accessible.

CAMERON PARK LAKE

COMMUNITY PARK | 56.5 ACRES



CONCEPT DESIGN

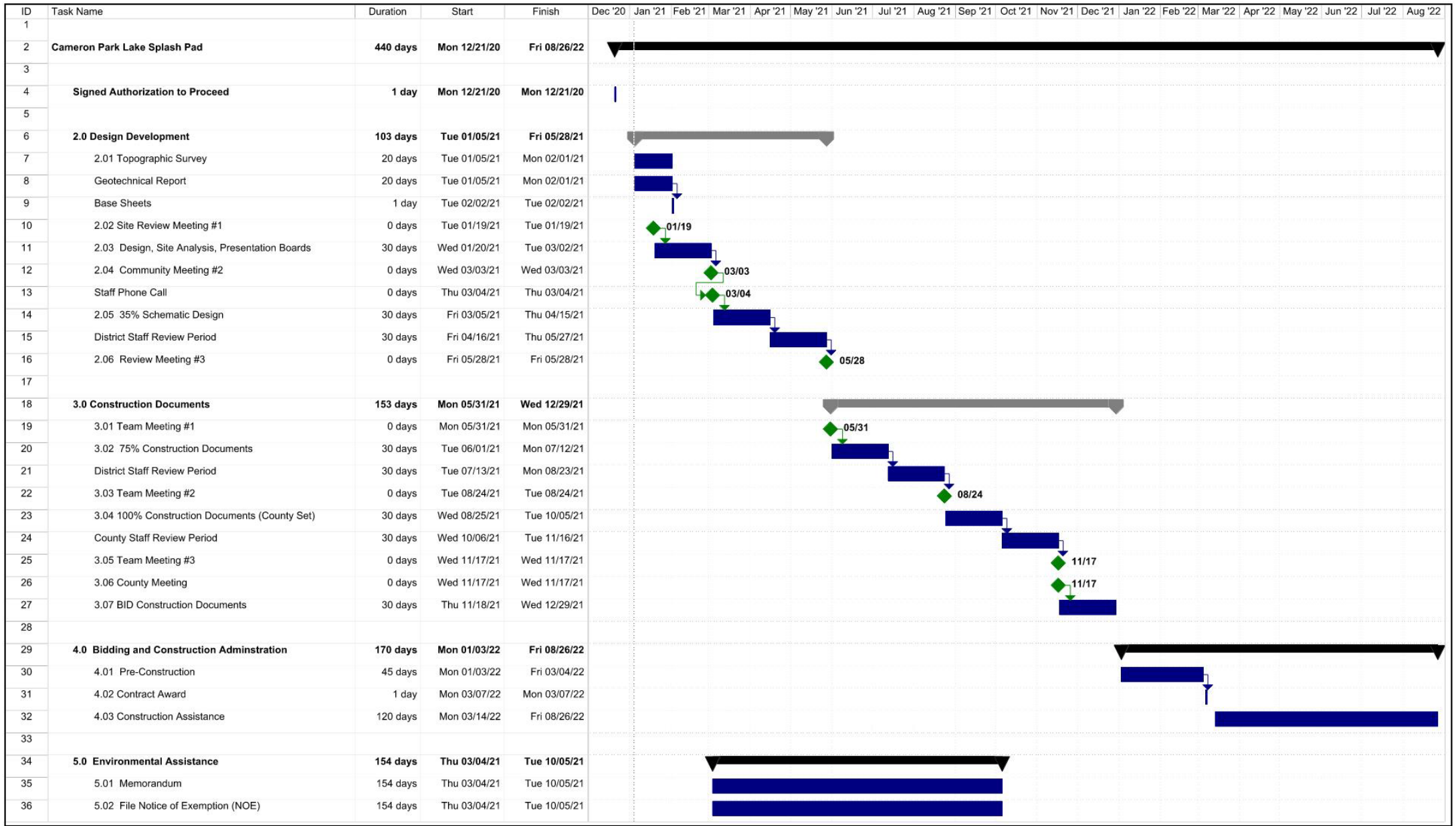


CAMERON PARK LAKE:
PARK IMPROVEMENT PLAN

CAMERON PARK LAKE:
LIMIT OF WORK



NEXT STEPS: DRAFT PROJECT SCHEDULE



© copyrighted 2021 Callander Associates
Landscape Architecture, Inc.
20010 SCH CPLake
January 04, 2021

A scenic view of a pond in a park-like setting. In the foreground, two Canada geese stand on a sandy bank. The pond's surface is calm, reflecting the surrounding trees and a gazebo in the background. The gazebo is a wooden structure with a tiered roof. To the right, a white ladder is partially submerged in the water. The background is filled with lush green trees under a slightly overcast sky. The text "QUESTIONS & DISCUSSION" is overlaid in large, white, sans-serif font across the middle of the image.

QUESTIONS & DISCUSSION